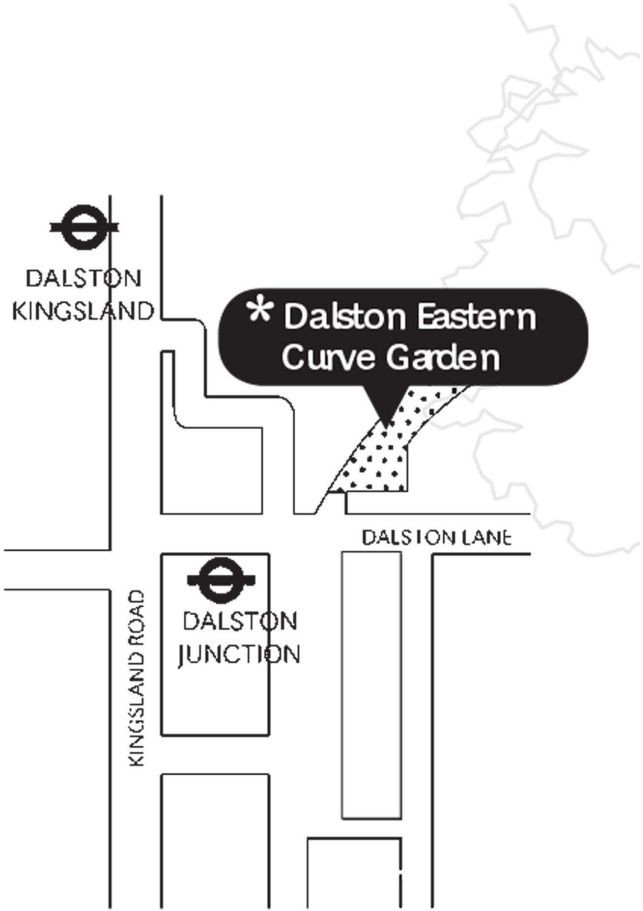


DALSTON CURVE GARDEN



Dalston Curve Garden,
located north east London
over Dalston Lane

It caught my attention because from
the outside you can't tell anything
about the place.

I was surprised by all of the dif-
ferent things going on inside: cafe/
pub/pizza/workshop/garden place

pg.
2



Garden Curve1. Notetaking

→ Is garden just because of
of a pub/pizza place? decoration?
Or just all of this thing shares the same space.

Before entering there is no insight of what's inside.
Inside there is wood and life inside.
Rustic → a lot of wood.
Open space.

But there is a sign about workshops taking place.

* Estructura

A. casual en madera una pegada con la otra.
solo las columnas en madera → estructura
básica.

Piso en madera y concreto → Todo. Only
rústico.

Entrada es un nivel mal acotado.
hay que bajar unas escaleras.

La luz es cálida → el techo es PVC translúcido.
Todo es OIY.

↓
la forma de la sala es una estructura básica.
hay repisar hechos con retazos de madera.
se utilizaron contenedores de metal para
formar mesas.

Decoración hecha en papel → como flores.
y círculos de papel.

Decoración / ObjetosDecoración

- Flores de papel.
- Flores de papel → OIY.
- Riquis, parangas.
- amarillidad.
- am.
- Material en chatarra → OIY.
- Papel → OIY.
- Bola de hilo.
- Vela dentro de jarrón uerico.

Función

- parlantes.
- radiodifusión.
- letreros: No smoking.
- hand sanitizers.
- Objetos.
- Velas → usadas.
- platos.

• cubo para papas → OIY.

Enredadera en 3 nave.

NotesImpression

Atmosphere not changed.

NO. music

No Pizza → only on Saturdays & Sundays.

People have come in.
to read, listen to music
eat by themselves.

Volunteers are ①. Visible, Stationary. BUT
move around because of little to no movement
(client).

There is a back area.

On weekends you can listen (identify by
sound the volunteers).

On weekdays you can see them easier.

No. lockers or keys.

Curious people just walk in.

Small groups of people walking out (1).

A woman buy a snack, leave.

More volunteer work seen.

① Estructura

6 columnas
entrada + 4 "naves" / casual forma cuadrada + Δ
en madera + techo PVC translúcido.
piso retablo de madera y cemento.

escalera entre entrada y naves.

Drayman negro en la parte posterior.

② Espacios (usables)

1. Entrada y salida.
2. Baño.
3. Cafetería.
4. Pasillo.
5. Salas de estar (x2).
6. Cocina/pizzero.
7. Horno.

③ Mobiliario

1. sofás → todos + (parecen reclinables o
donados).
2. metal → una larga de madera.
hierro.
otra de madera rectangular.
tipo parrilla.
3. Horno de pizza.
4. mesa plástico. O largo para preparar pizza.
5. Baul con cajas.
6. pintura de un lugar que se alinea a
este lugar.

NOTE-TAKING

Random(?) first impressions
Breaking down the services,
how the space is made out.

Stating the obvious

Asking myself "What is this place?"

Why do I need to classify everything

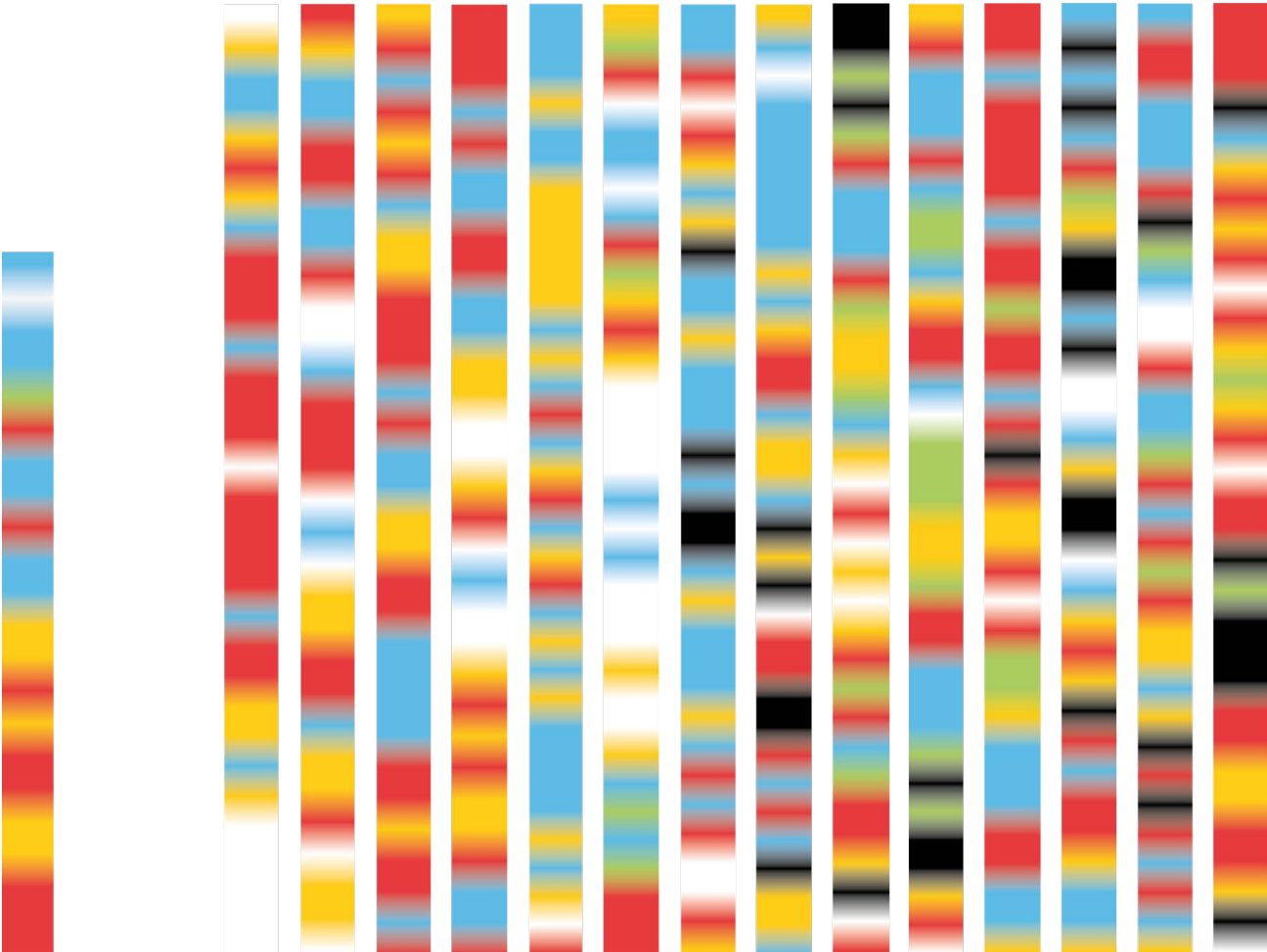
A lot of things going on,
Move --> to a non-visual sense

#1	Bottle full	Footstep	→ Long	Convo
Platel	Notification		Click	Convo
Chatter	OK. That's good		Convo	socket
Hello	Conch		Door closed	machine (load)
Laugh	Gibberal		Convo	Convo
Step	Cartava. On up		Clicking	moving object
Bottle	Glasses		put ball	glasses
Step	Beeper		unwrapper	Convo
Drill (outside)	Door cabin		Step running	Convo
Blender	Steps		unwrapper	Notification
Door knob	Glasses		moving cabin	XL
Step	Coff		# Convo	brush surface
Platel	Rumbling		# Convo	squeaky shoe
x2	Laugh		Toddler	Yell
Cartava	Gibberal		Notification	LOOK! a friend
Motorcycle	Steps		# Convo	good
Carta. Coffe machine	Brushing floor (out)		Leop	plug
Outside C.	unwrapping		Plated	surging
Front	Sidewalk beep		slurp liquid	Object
Mug	Steps. another close		task	Cup
Steps	Airplane		sniff	David
Glasses	Jeep exactly		Adm	Yell
Glasses	Laughter		→ Convo	making
Door	" "		Laughter	Laughter
Coff	Airplane still		Laughter	cliff
Bottle	Honk. car		bottle pop	Convo
Mumbling	Chatter		Keys	coff +
Cartava	Cartava		Laughter	moving sheet
Mumbling	Laughter		Convo	Convo
Jeep	not door		artificial napkin	Notes desk
#1.75	Construction outside		Laugh	glass on table
Convo	Coughed		Chatter	Laughter
Sniff	Step		Glass	Big open
	Cartava		Toddler	

SOUND RECOGNITION

What can I learn from the place through sounds/
what can sounds tell me

Listing process
Hard to find a pattern through words
--> turn sounds into a graph



It was hard to categorize the sounds (object, interaction, human sound) because all of them where made by a human interactions.

i realized that human interaction dominate the space and what it is.

Also, the city (black patches) are very disrupting. The outside/city invades the garden space.

Discreción

⑦. Ethiopia. 6. rodinal
 entrada a. a. naves / casal, forma construido. △
 en. maquina a. seco D.V.C. transluento.
pilo, redoble de maquina a. construido.
 exalared. entre construido a. naves.
Drogas negro en la parte portante.

(2) ENDOCAR (waffles)

21. Entrecote A. Salada	26. Coema / pizzaria
22. Baco	27. Horno
23. Caprese	
24. Pastelito	
25. Salada de carne (x2)	

③. mobilario

1. $\text{sigil} \rightarrow \text{todas } \neq$ (parecen caracteres o caracteres)
2. $\text{modul} \rightarrow \neq$ una letra de modulus.
bueno.
otro de modulus rectangular.
tipo pascas.
1. horno de ceras.
1. masa plastico B largo para preparar pizza
1. Baul con sigil.
1. interior de un lugar que se adapta a este lugar.

Decoración / Objetos:

- Decoración
 - Girasol de papel.
 - Flores de papel → D.V.
 - Rojas, naranjas.
 - amarillentas.
 - 2cm
 - Materias en alabastro → D.V.
 - Rojas → D.V.
 - Bola de cera.
 - Vela dentro de jarrón mexicano.

Function →

- particulate
- radiological
- hazardous: No smoking, hand sanitizer
- biohazard
- Volant → extract
- pharmaceutical

* careful para referencia → BY.

Enredadera en 3. raze.

(Sol se fue; nos vamos)

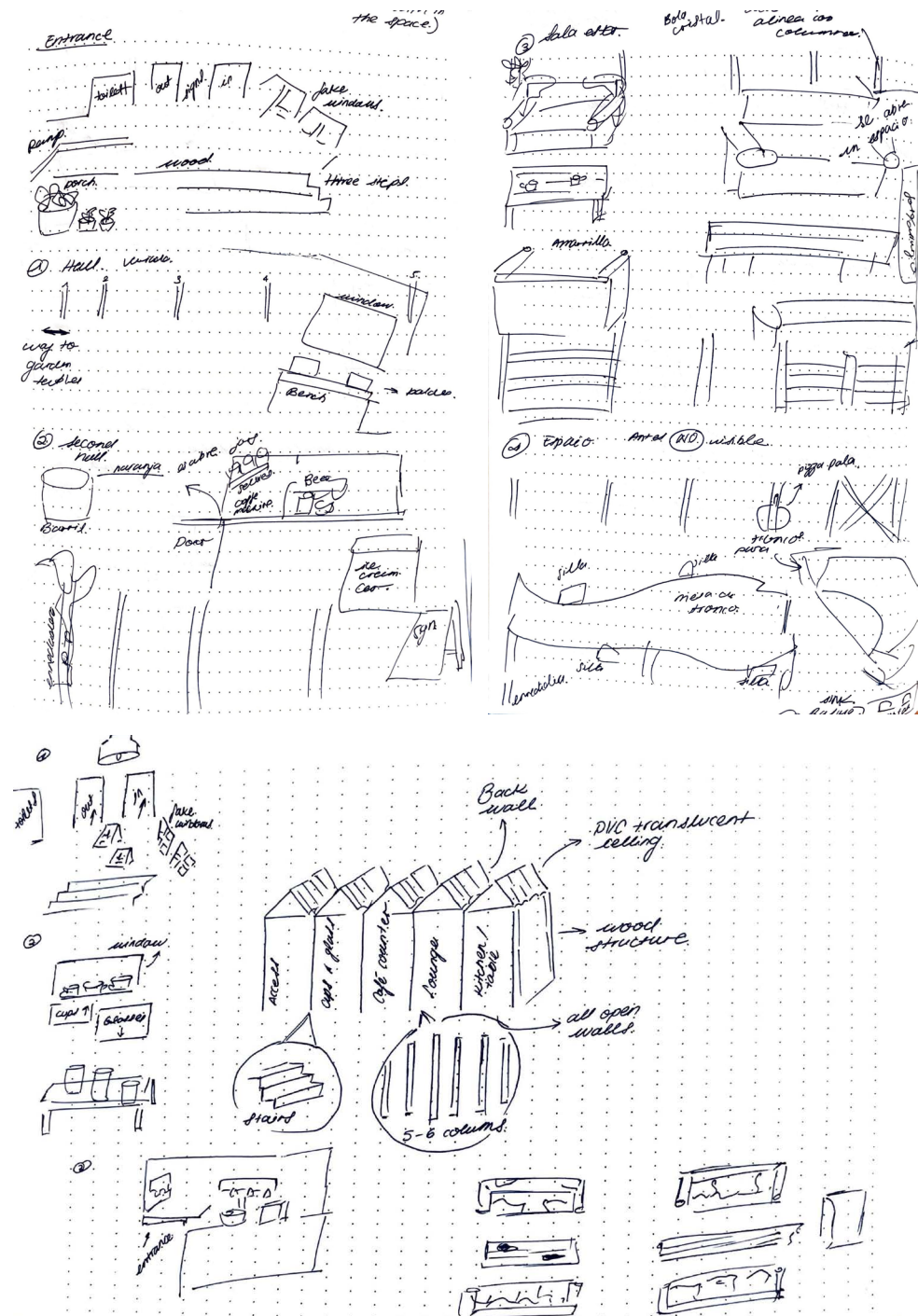
DISSECTION - PLACE

Inventory like process of the layers that
makeup the garden pavilion

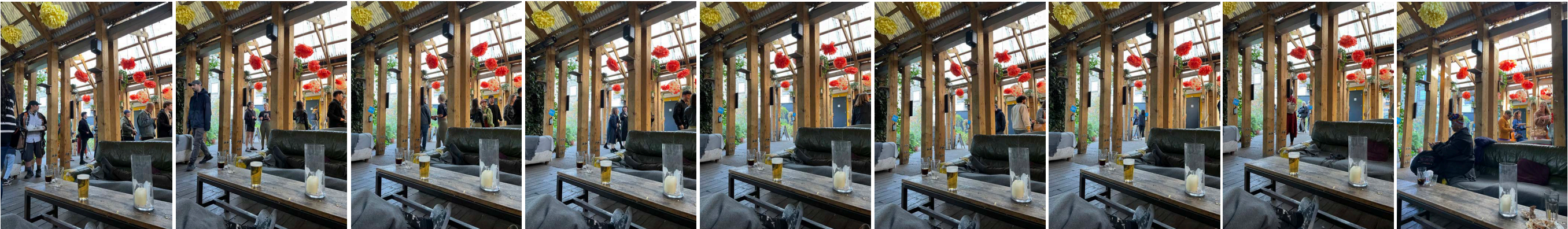
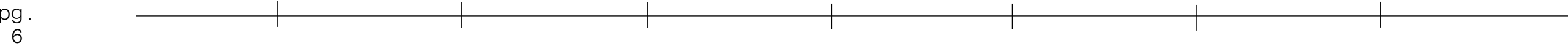
Macro --> micro
Structure, textures, furnishing, objects.
Listing process

There are spaces within spaces.

Not alot of insights.



Every 2min. from 4.44pm - 5.58pm | main pavilion



PHOTOGRAPHING

Slight changes
--> objects, light
Structure, textures, furnishing, objects.

Most changes are the flow of people, how they enter, interact and leave the space

Relationship between garden & city/urban.

Symbiosis?? → mutualism
→ commensalism
→ parasitism

(A garden of / with waste?)
appropriate reuse to create a garden(?).

How do gardens have to change with the
changes & growth of cities/urban areas?

Constant tension between
wildlife & curate the ≠ urban surroundings/
(plants/nature) space for & neighborhood activity

FEEDBACK

Find a focus
What am I capturing
What do I want to reveal?
Is it meaningful?

FIRST CONCLUSIONS

More interested in the people and the
objects that interact with in the place
than the plants/natural aspect that
define a garden.

Interesting in understanding what this
place is. It is named a Garden, but it is
more than that, there are a lot of
services and uses people give it.

INTEREST

Relationship between garden&people

FOCUS & DIRECTION

the IMPRINT people leave on this place

