

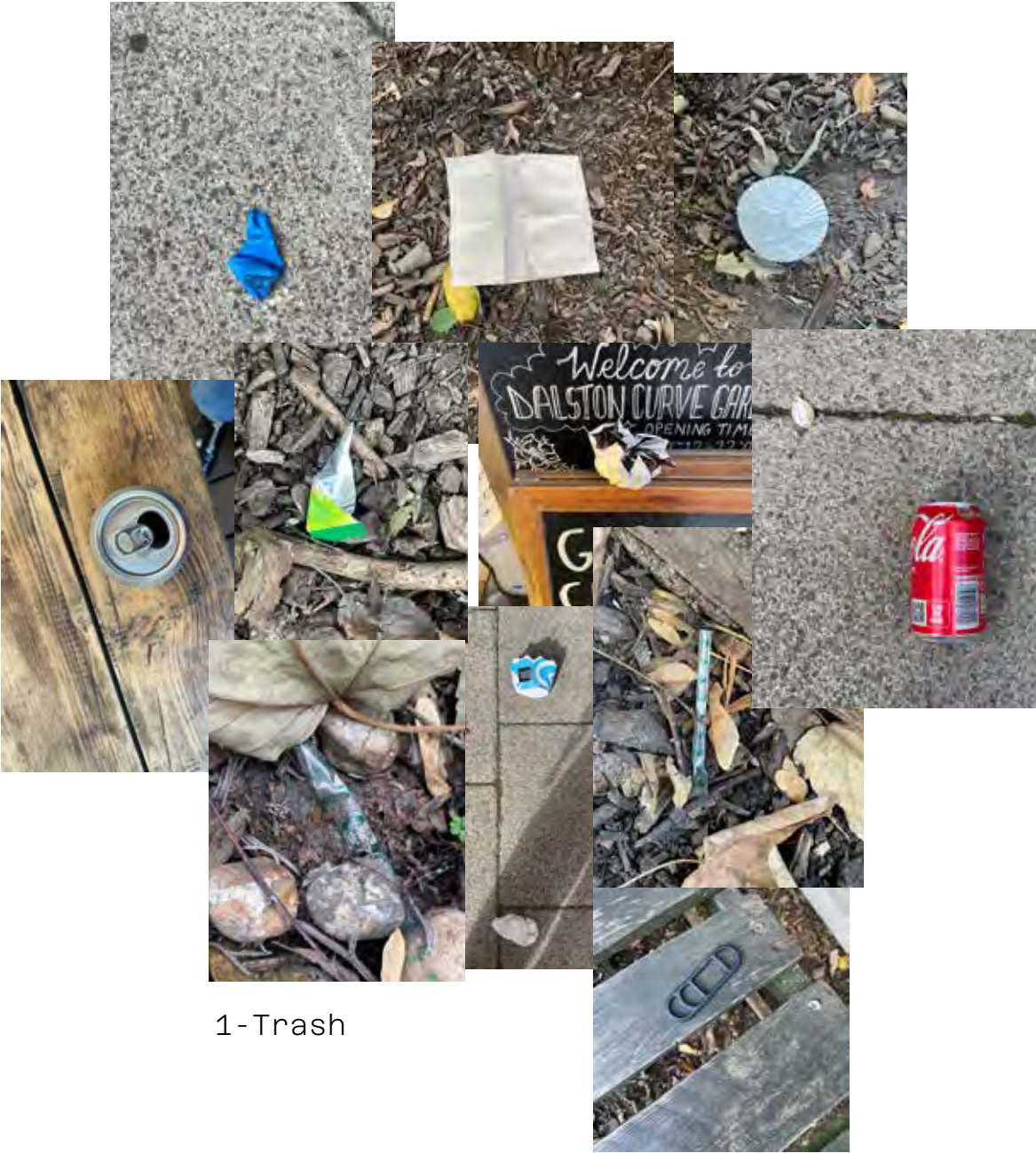
HOW DOES AN IMPRINT LOOK LIKE
& HOW CAN I REGISTER AN IMPRINT

pg.
8

Def. IMPRINT

the mark/TRACE of a person/people
interacting with the garden

PHOTOGRAPHING
Human RESIDUES as traces



1-Trash

2-Used objects





Left over cigarettes

Traces of a people, reunions, the pass/
acumulation of people and time

A lot of people smoke together or ask
other people for a lighter

Tension between one of the most frequent
activities at the garden, and one of the
most recurring sign "no smoking"





PHOTOGRAPHING Signs --> how people should navigate the space

PHOTOGRAPHING

Repurpose objects that are integrated into the enviornment/space - purposely

A purposely made IMPRINT

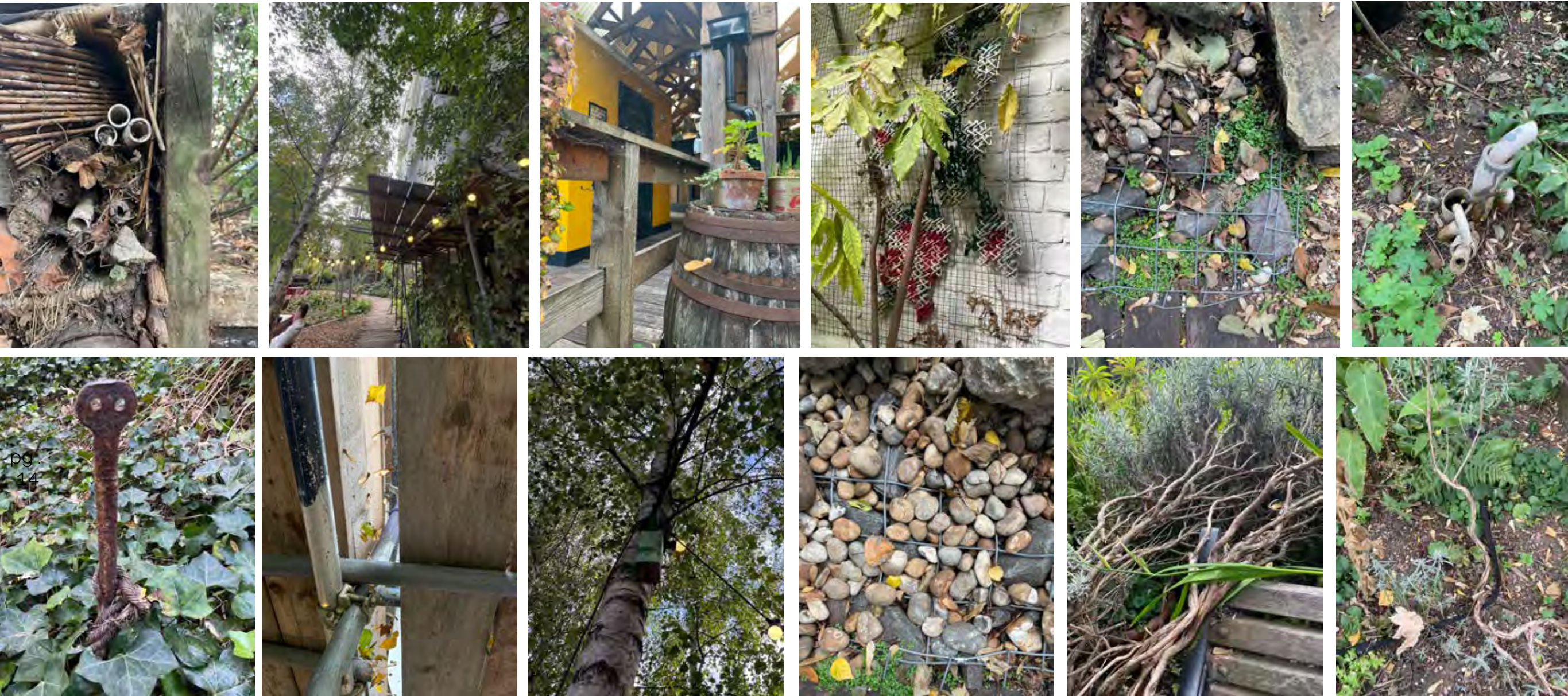
Gardens a creative outdoors space



PHOTOGRAPHING

Controlled nature, shaped to specific nonorganic way
An IMPRINT of how we shape nature to our needs

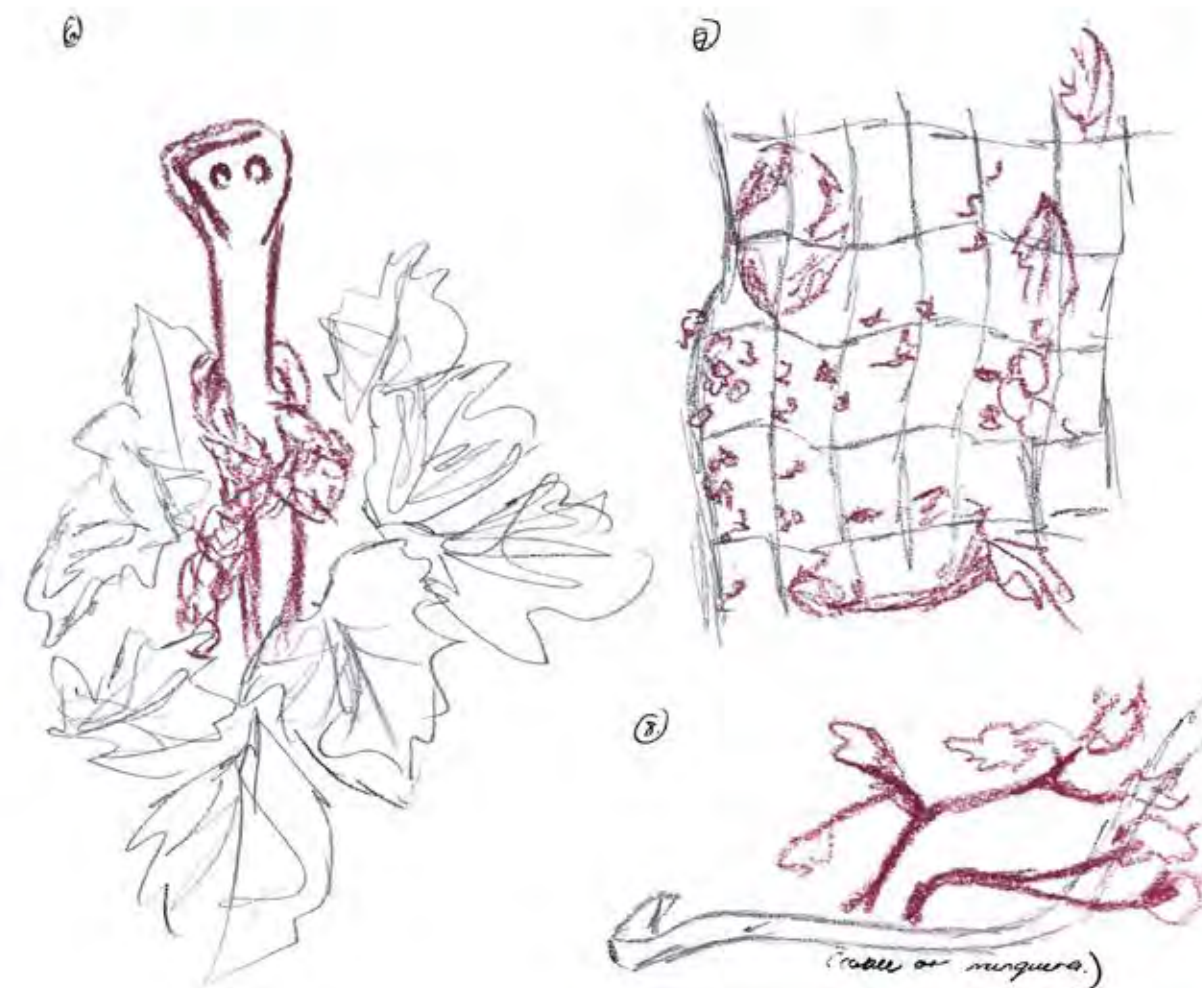
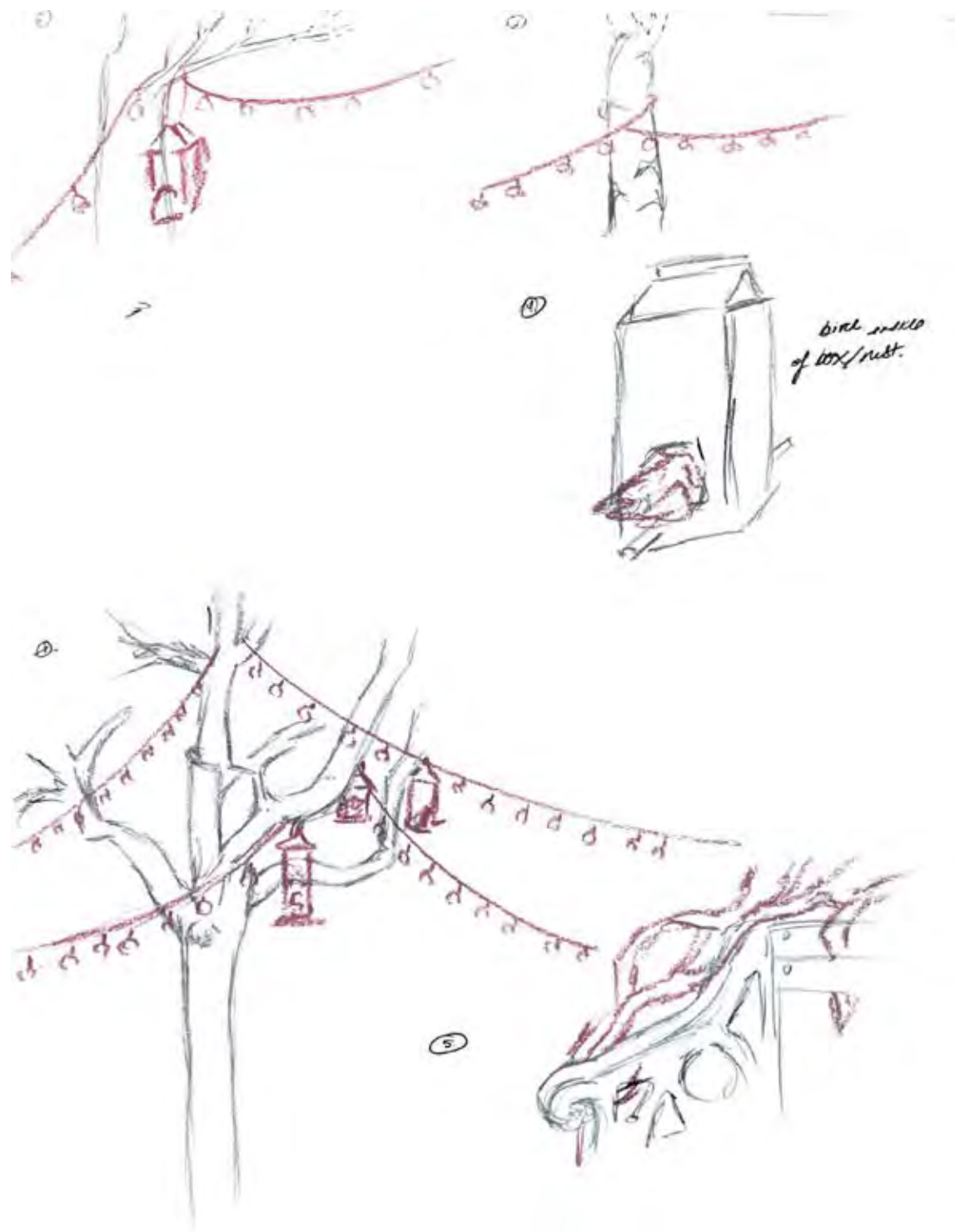




PHOTOGRAPHING

Artificial artefacts that morphed with nature or
viceversa - human print camouflaging

Symbiotic relationships



SKETCHING

The symbiotic relationships between nature and objects placed purposely by people

Netlike stucture on every sketch



PHOTOGRAPHING

Looking for literal human traces of where people
where and how they moved around ej: footprints



Human imprints are not
always visible or explicit

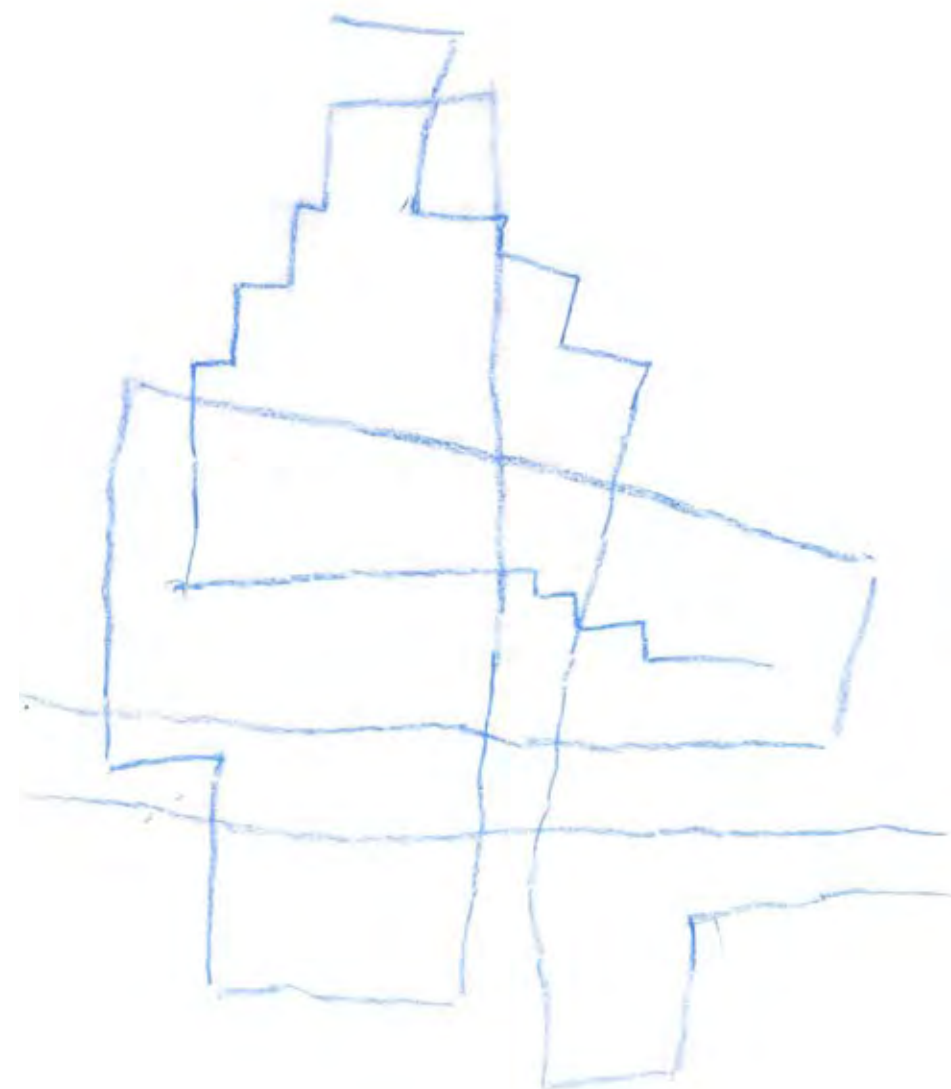
pg.
17

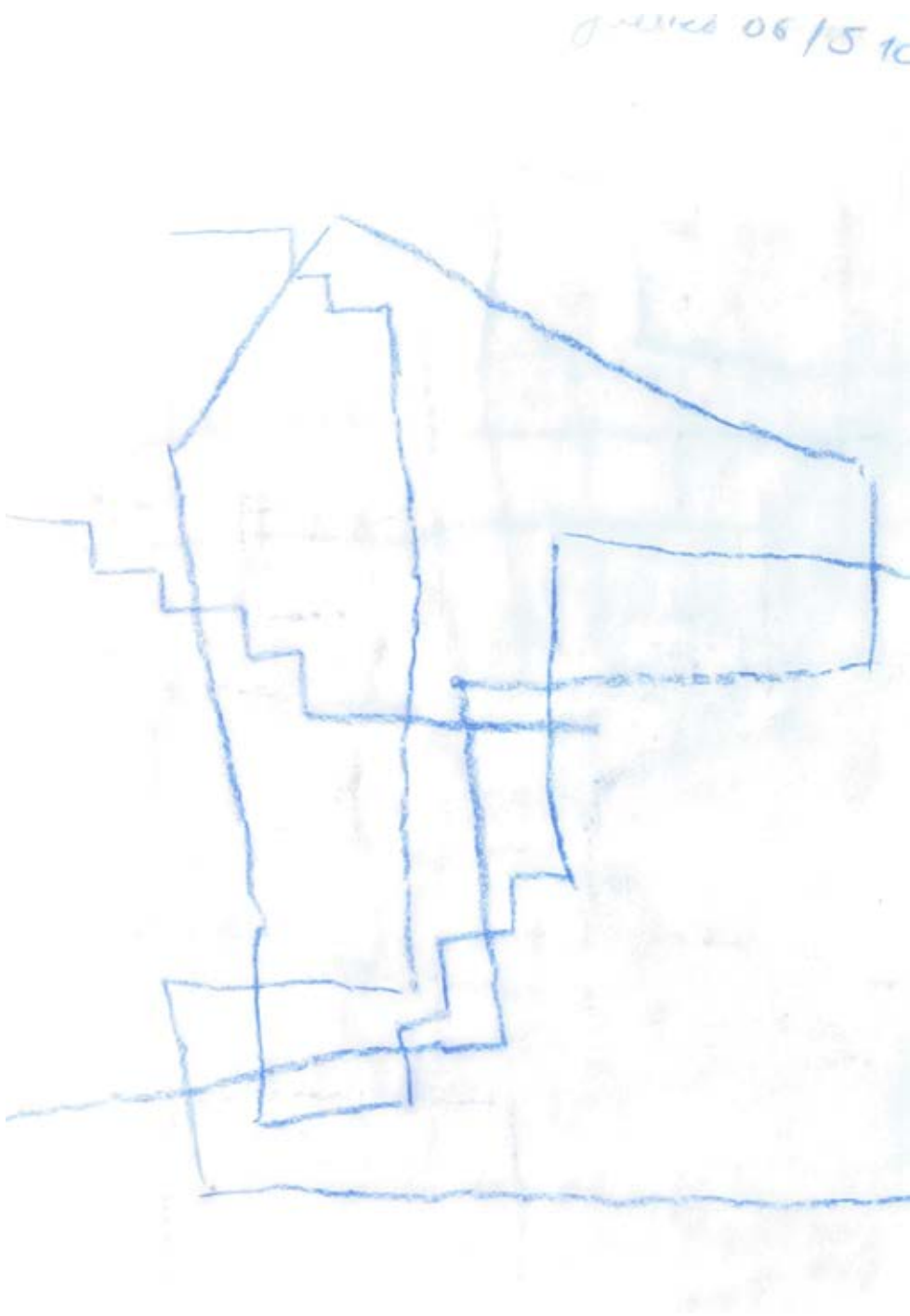
| How can I capture people's
interaction or thier pass through
the garden

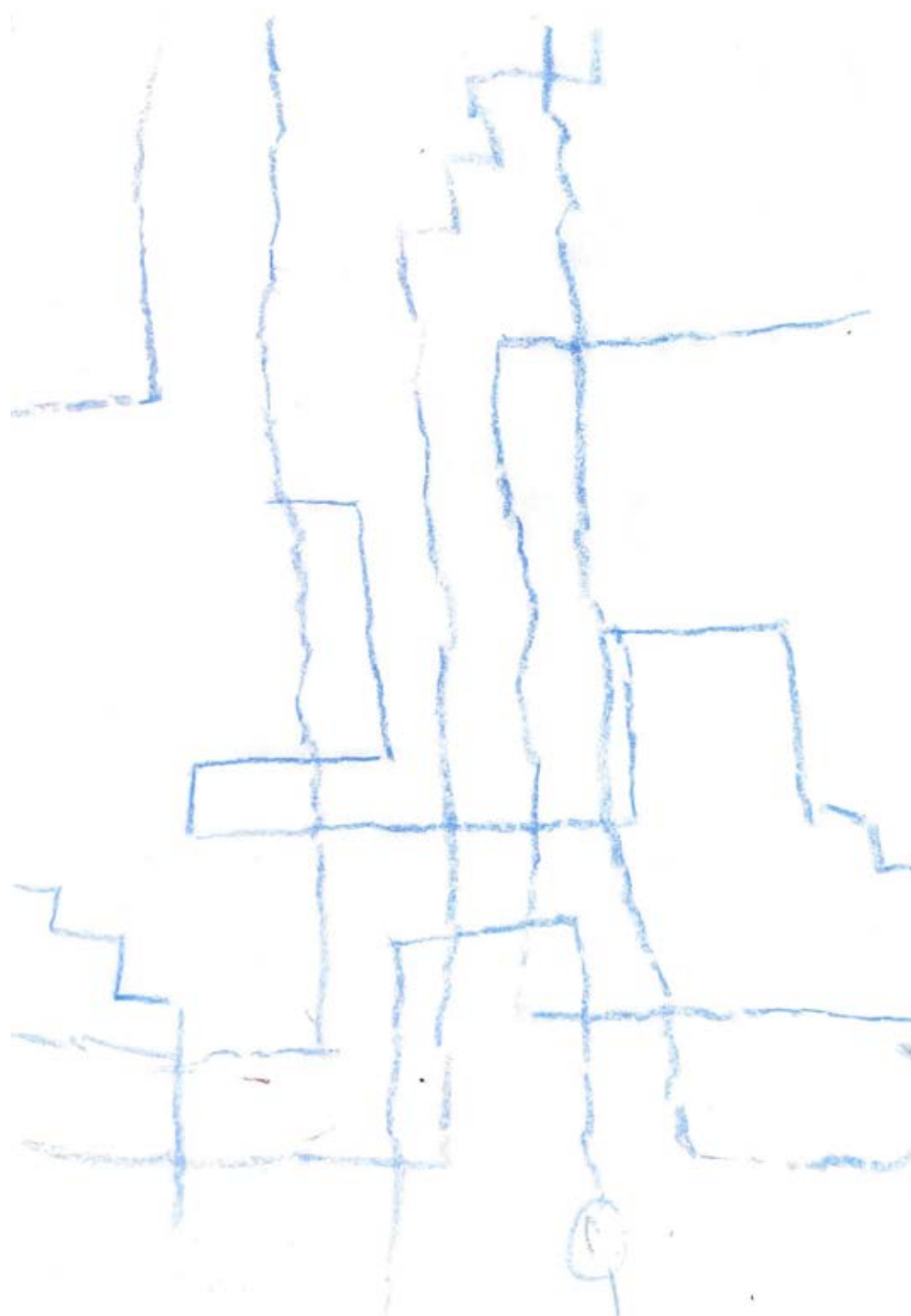
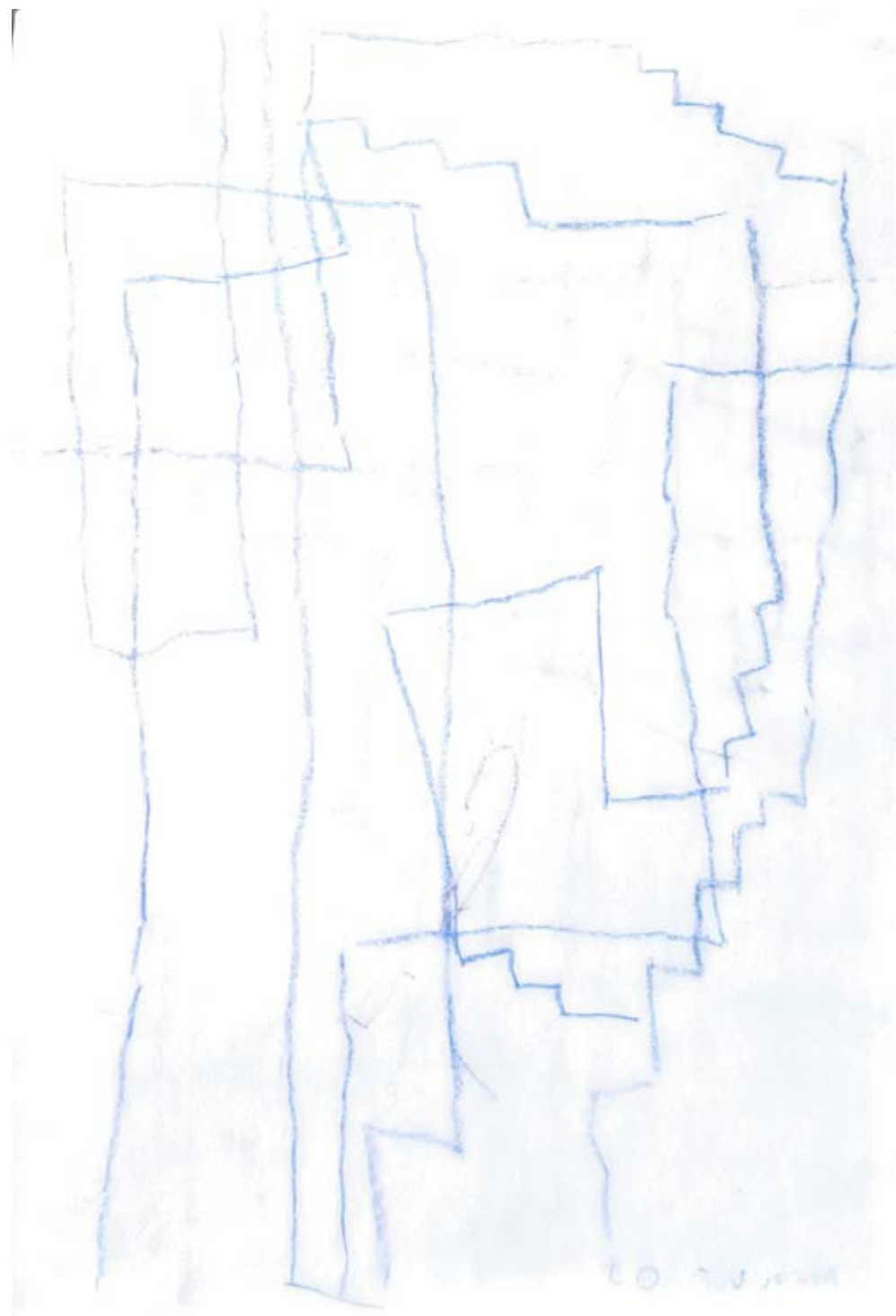
MAPPING

First I tried to map all of the different ways I can navigate the garden.

I did this by drawing a line as I simultaneously walked, and everytime I changed direction I moved the direction of the sketchbook







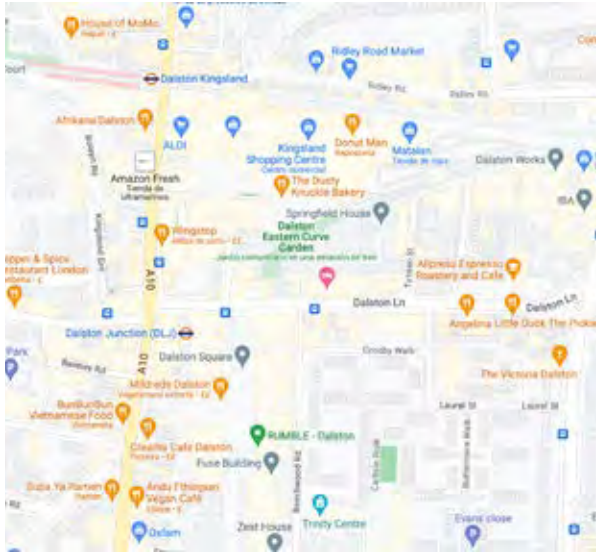
MAPPING

The results were interesting to me because visually it looks like city-like roads. It could be the map to various places.



TIMELAPSE

I recorded about 15-20 minutes of people in the garden. People looked like ghosts, leaving long exposition traces.



Background Research:

serve local products
→ e.g. brewed beer

Why?
What is it?

"vitality needed public green place
connection to nature in the city
community gathering place."

Hackney is the third most densely populated borough → very few private gardens (or nearby garden). People don't have access to.

When? 2010 → created on Old Eastern Curve railway line.

project: making space
in Dalston → Design for London.

address Dalston deficiency in quality public space.
Council + local residents.

What?

public green space → area lacking of greenery & space.
(Hackney)

volunteer work

- education programmes
- community events & (workshops)
- cafe/pizza service
- garden work/care.

2010 garden not planted → before a derelict site

need for growing food: was taken into advantage & transformed.

then want to support insects & wildlife as well.

Every Saturday there are gardening sessions to look after the place.

"Urban Oasis" → disused railway.

↓

old eastern curve railway.
closed in 1950's.

Design in collaboration

transformation in response to lack of green spaces in Dalston area.

Value of garden

as a place to relax.

1. offer respite from busy surroundings.

CONTEXTUAL RESEARCH

The garden came about because of the deficiency in quality public spaces in Dalston-Hackney

INTERESTED:

Analogy/Simili between how the railway stations and lines connected people and how the purpose of the garden is also to connect the neighbourhood



CONTEXTUAL RESEARCH

I searched for pictures of the Old Eastern Curve Railway and found a map of all the lines that passed through the area.

There is a visual relationship aswell.

Both the railways and my garden maps are connections of lines that find themselves and open into new places.

I overlapped the my garden trace with the railway and garden map(over view)

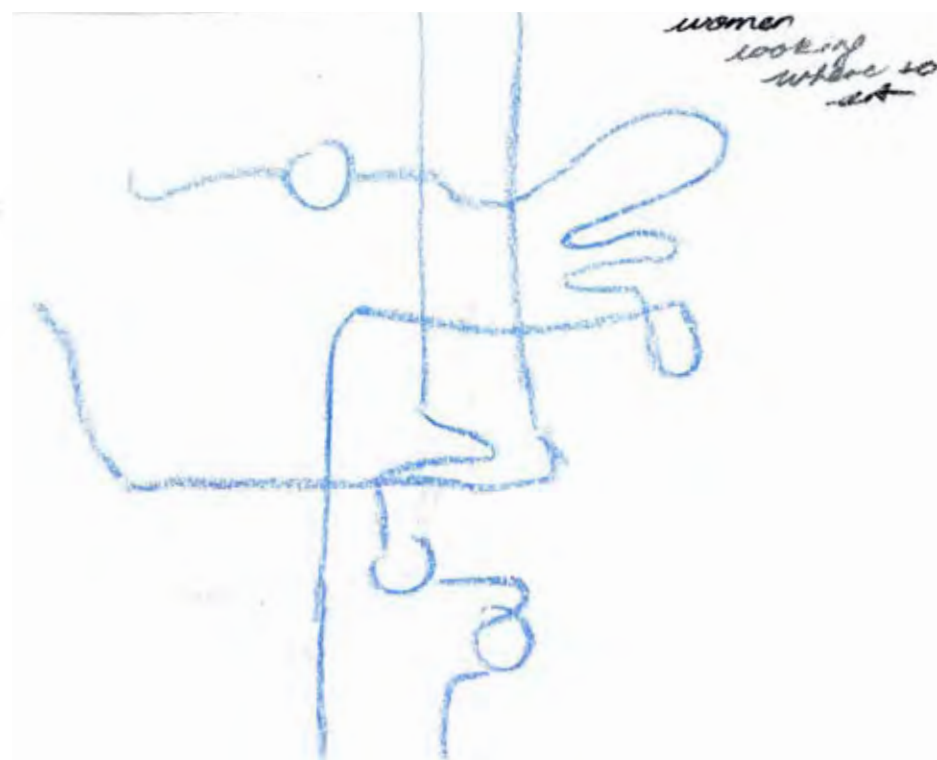
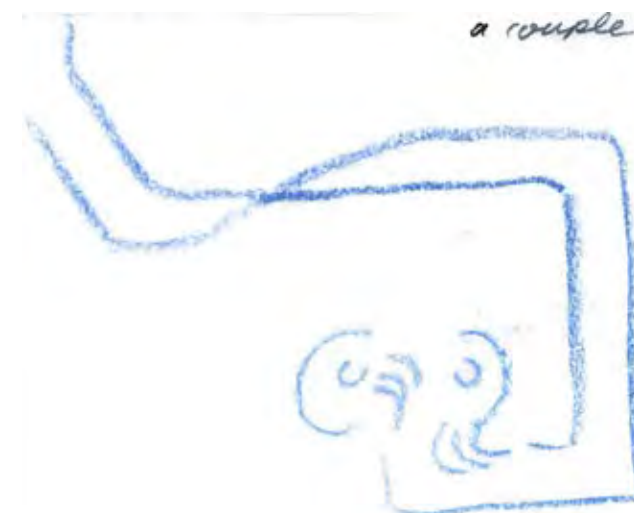
Especially with the railway map, it is very interesting to see the lnes overlapping



MAPPING PEOPLE

pg.
24

I want to try and map the different people that go to the garden to register what they do and why they go to the garden



These were the first maps I made for different types of people

Lines = walking

Circles = Stops

Circle + stop = sitting down

Waves = conversation

The title of the map is a note of the person I was mapping

young men
just milked us.

women
alone

asked
for lighter
(smoking)

women with our
coffee

two women looking
where to rest

men and women

couple running around with kid.



friends talking couple + drink



worker organizing place



woman walking around + sitting down



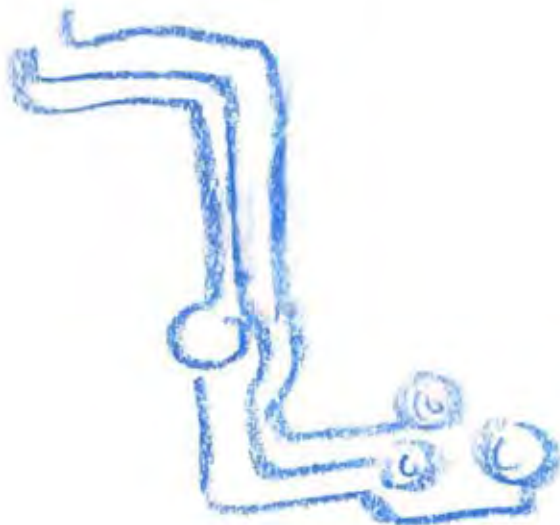
friends
having a coffee.



two friends

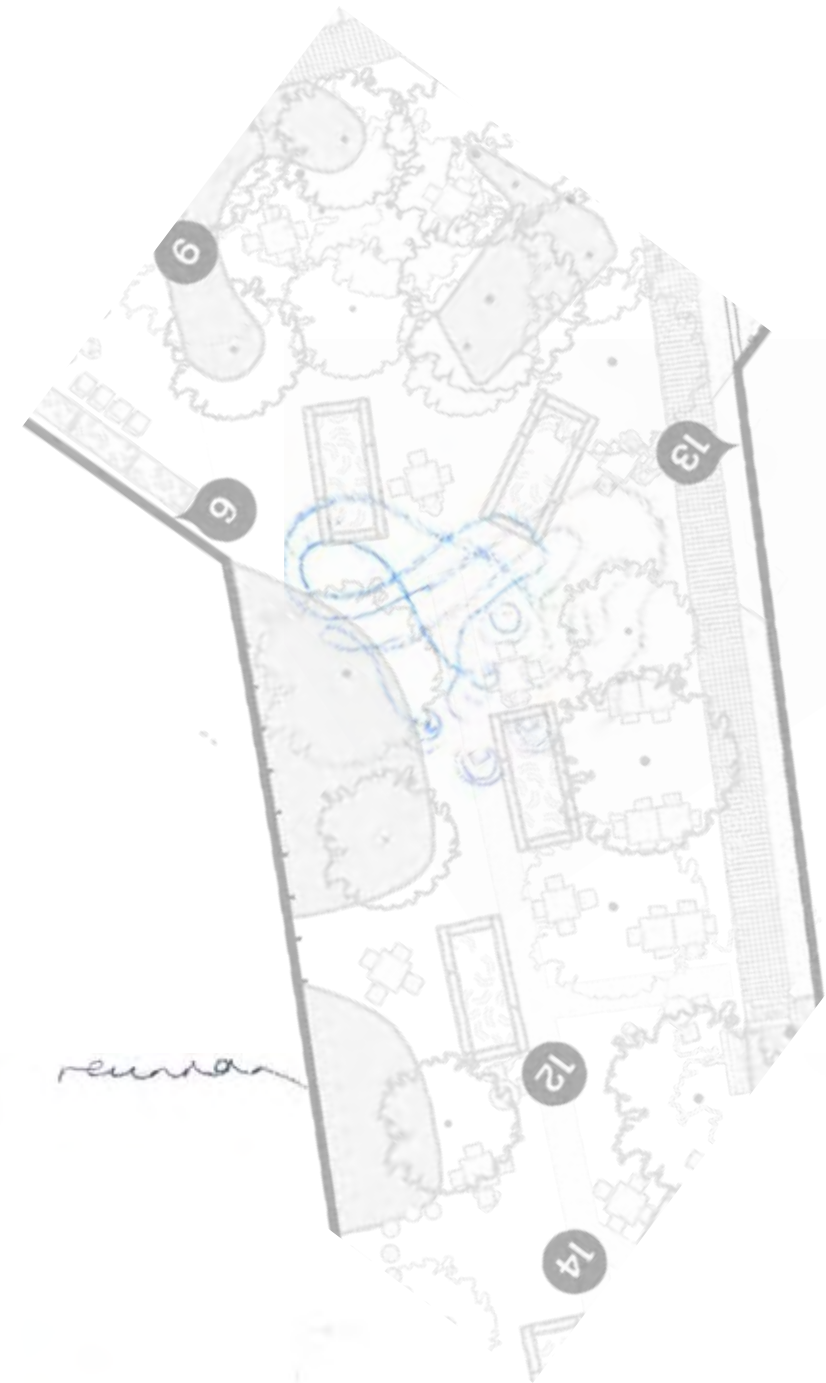
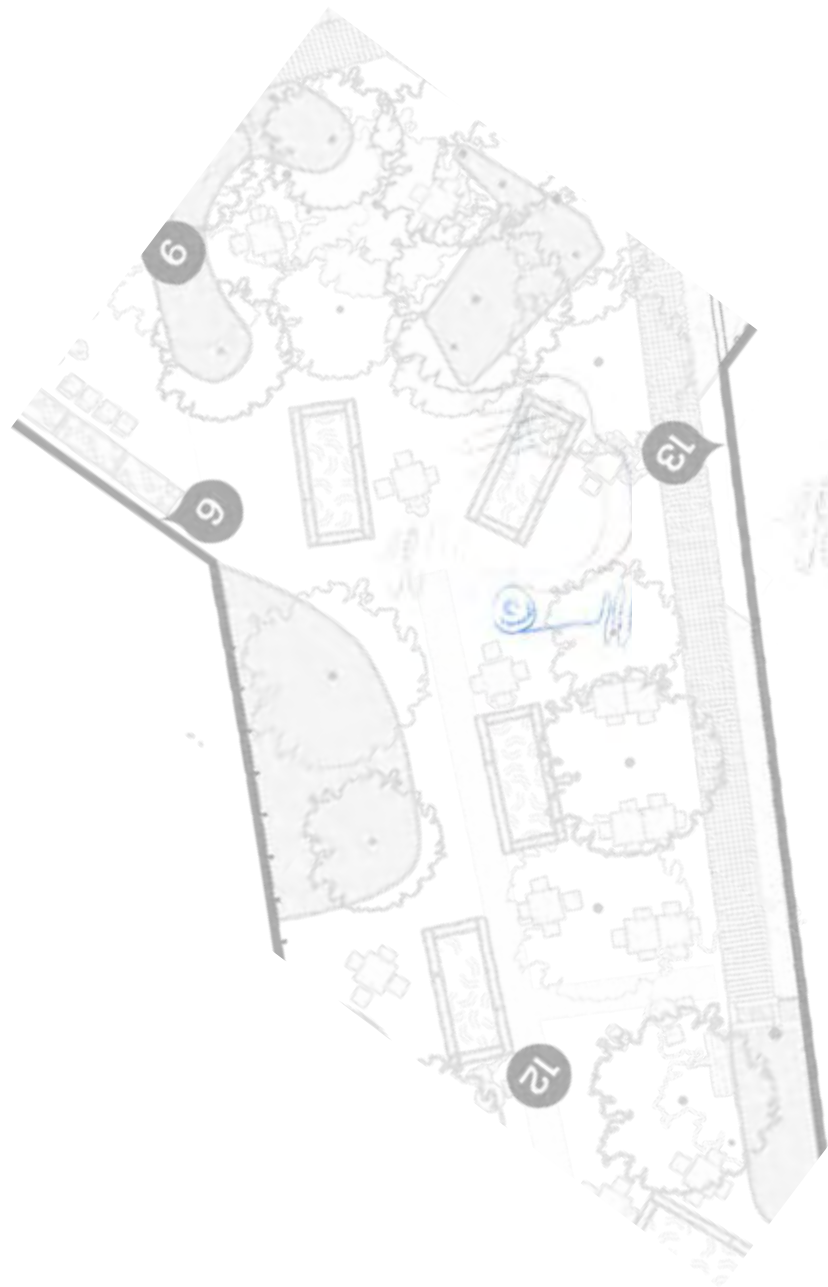


three friends sitting
down



friend
goes to bus +
come back

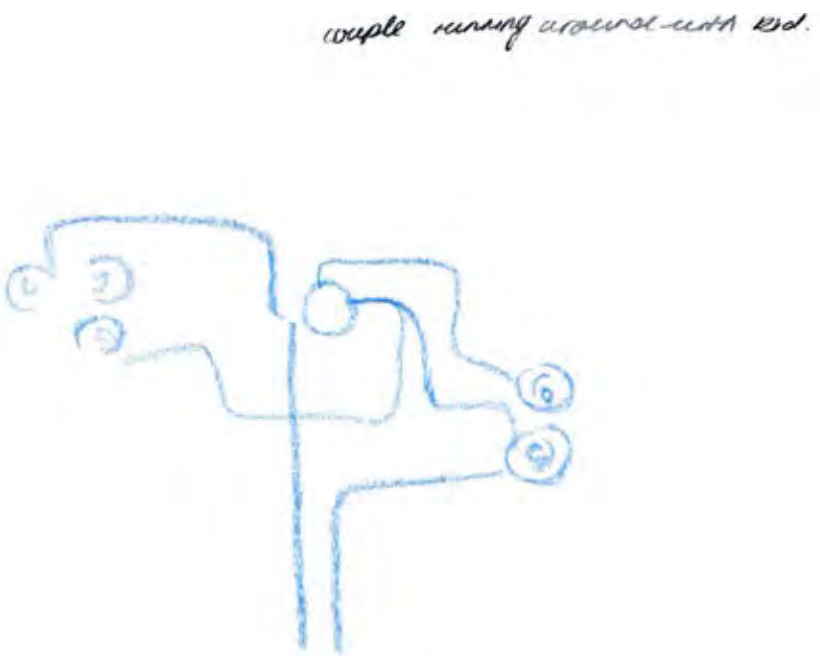
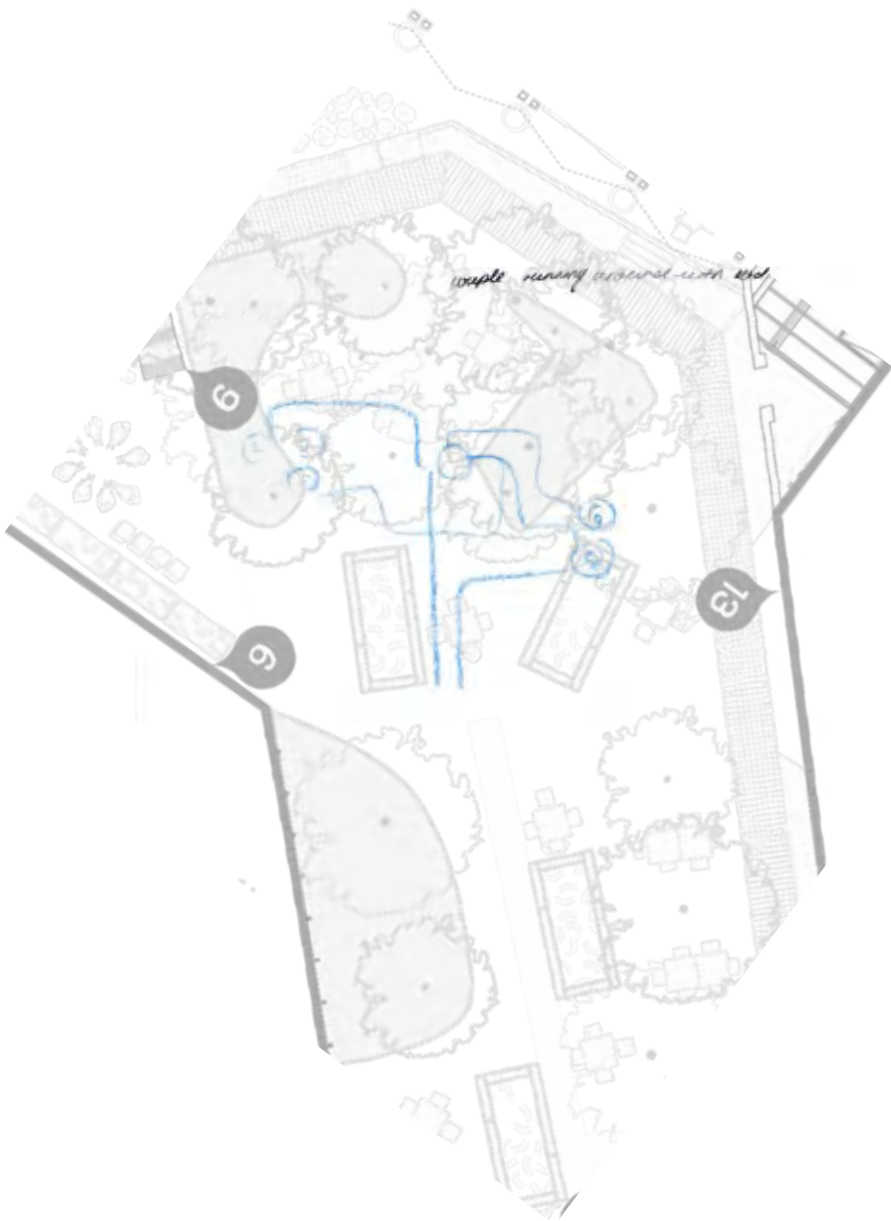




I overlapped the maps with the area within the garden they were occupying

However, didn't find much insight by doing this.



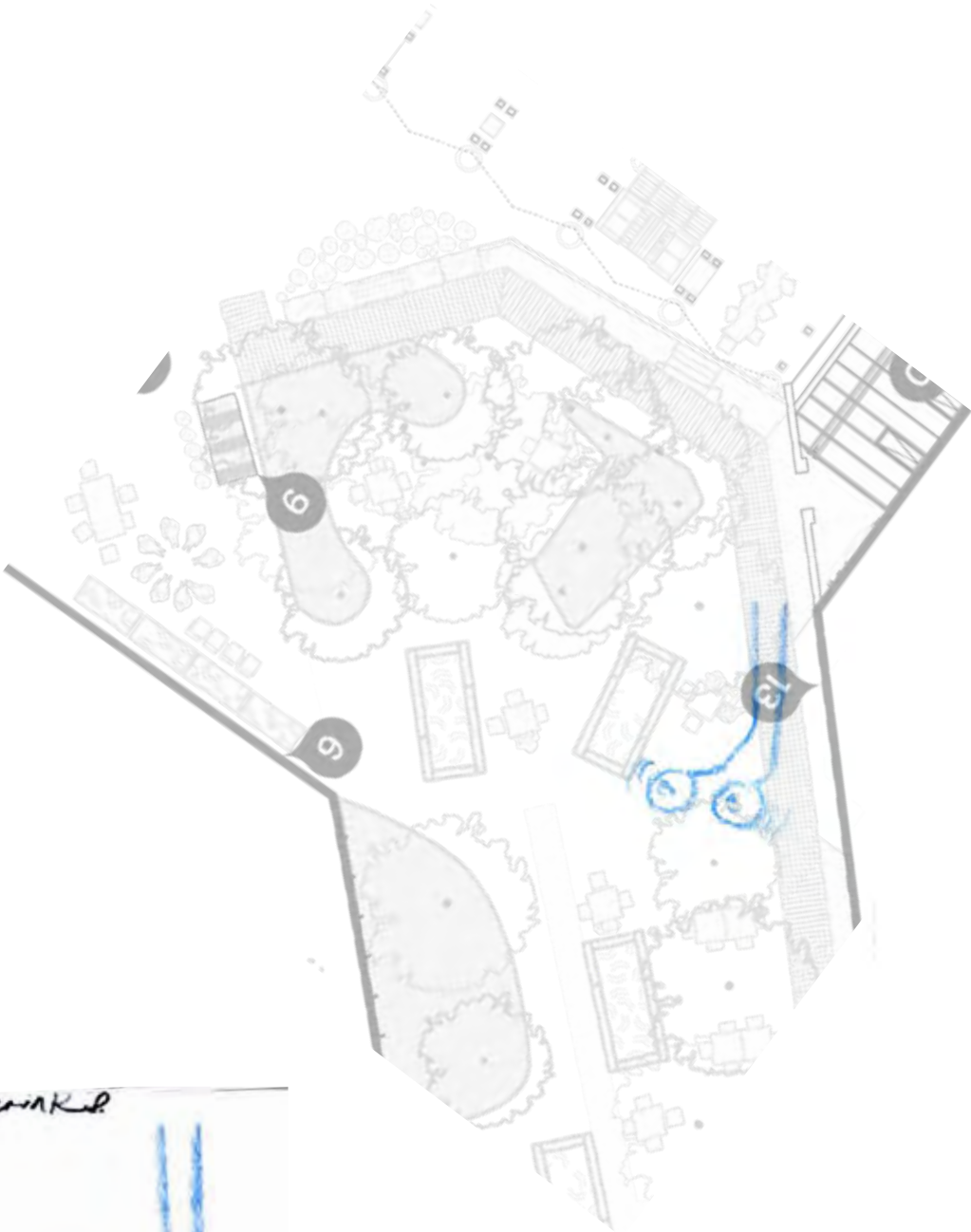




friends talking



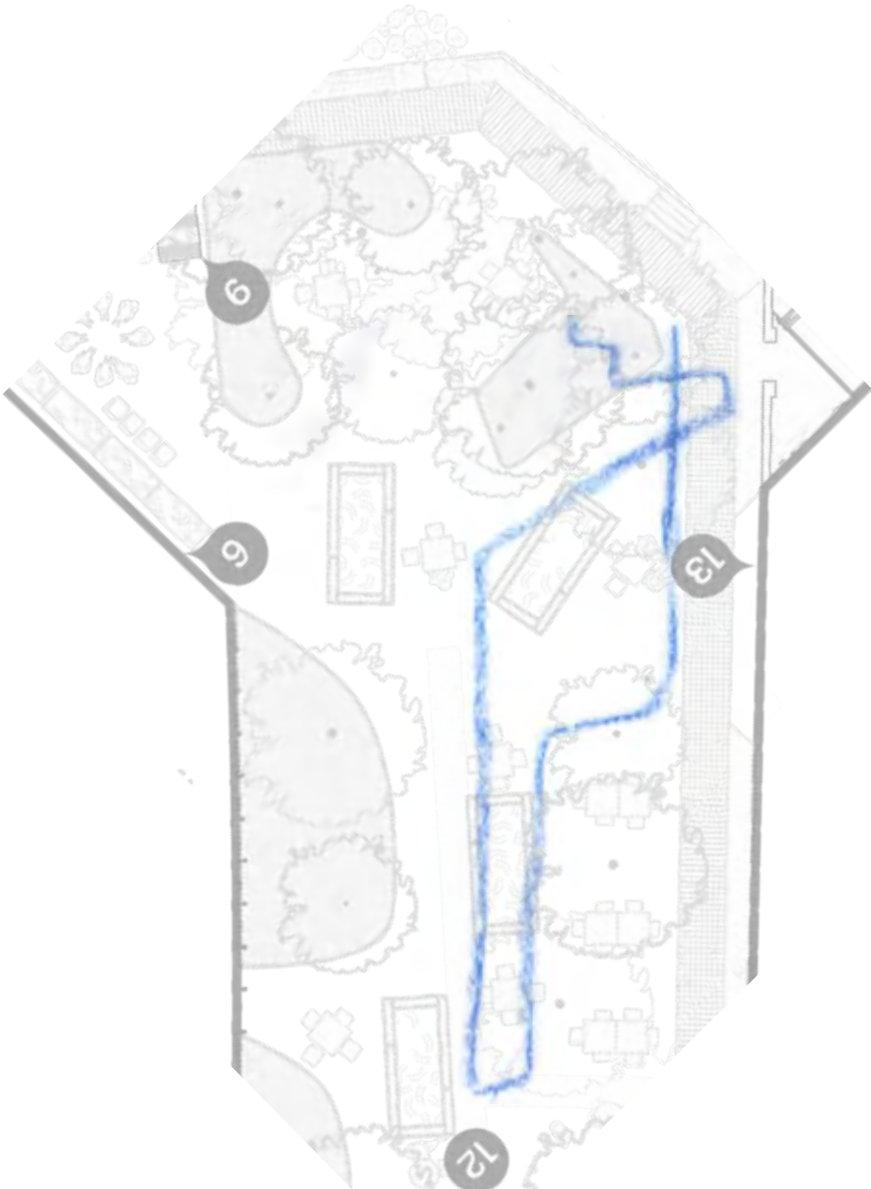
workshop organizing place



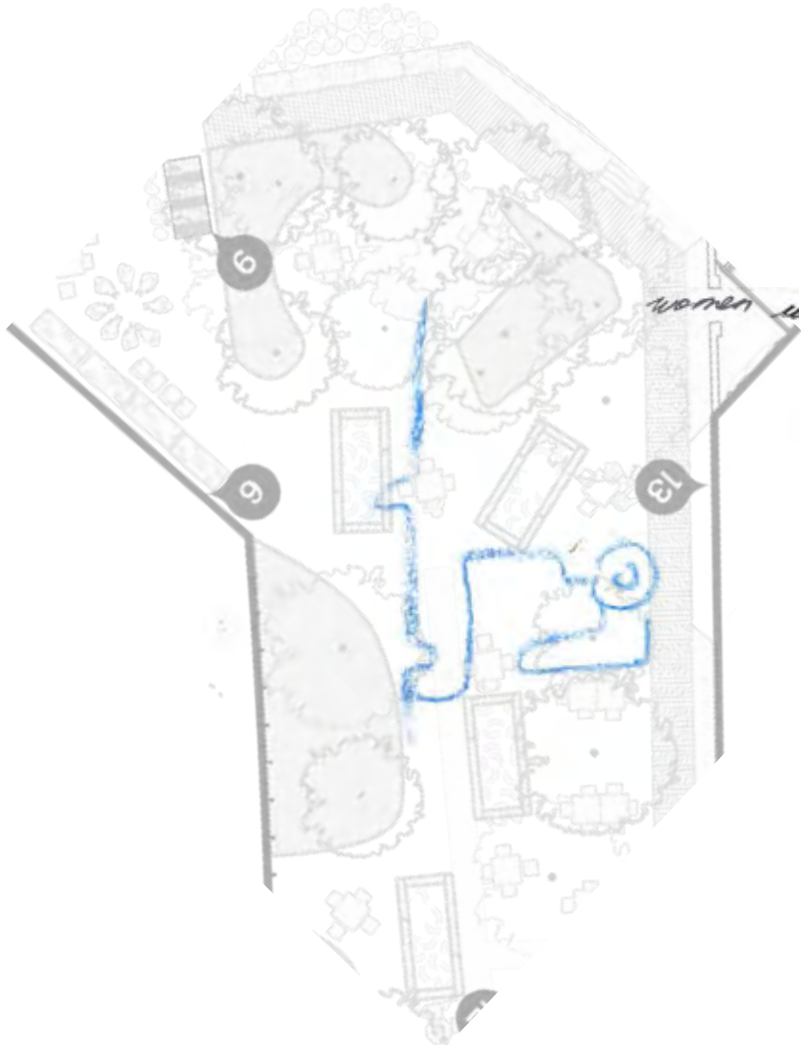
woman walking
around
+ sitting down.



couple + drunk

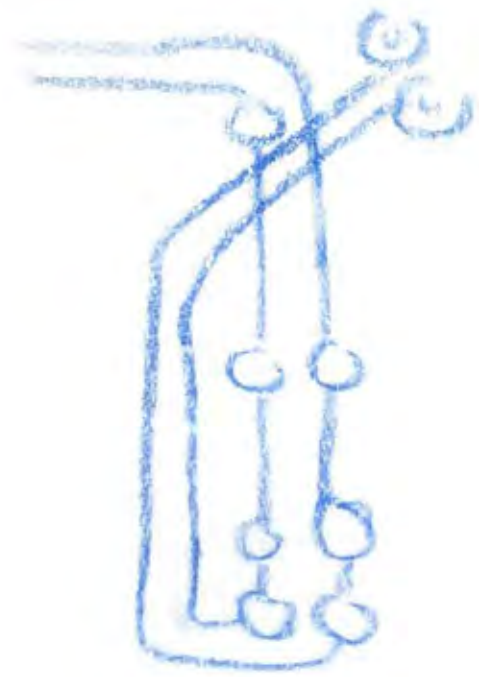
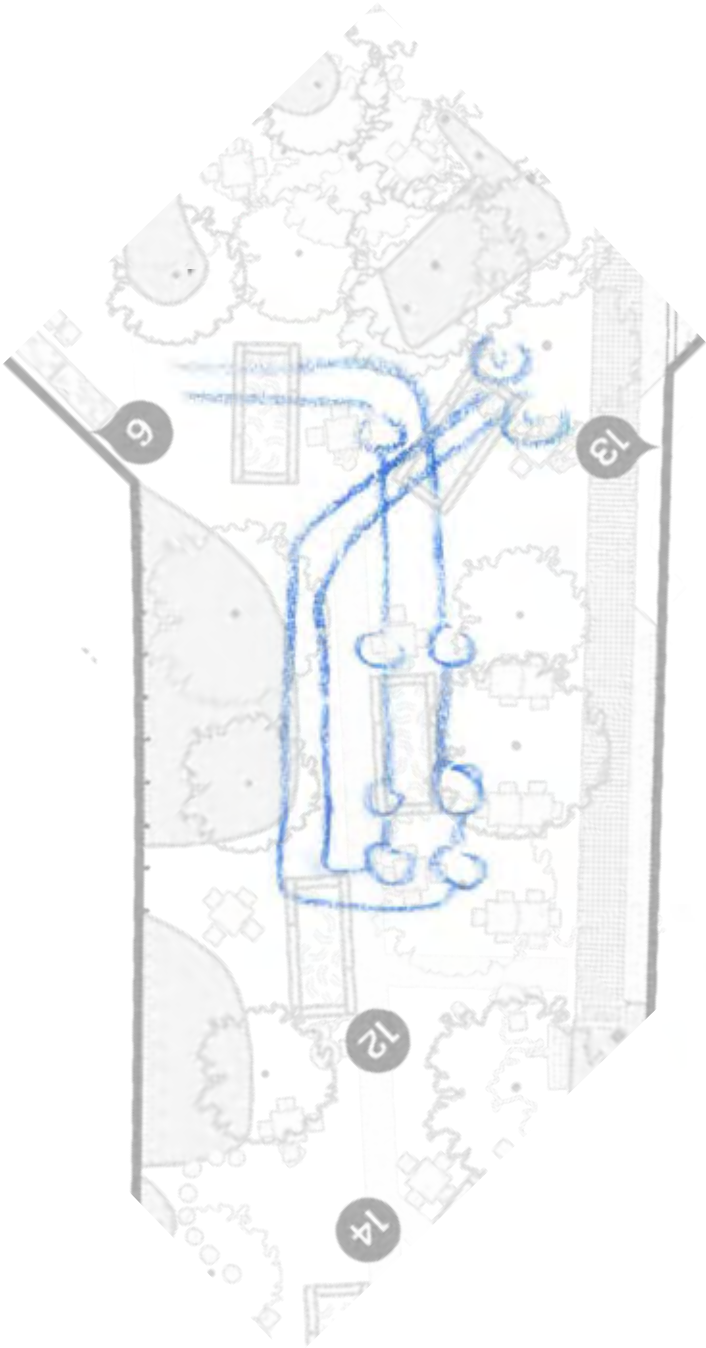


very men
just milked an.

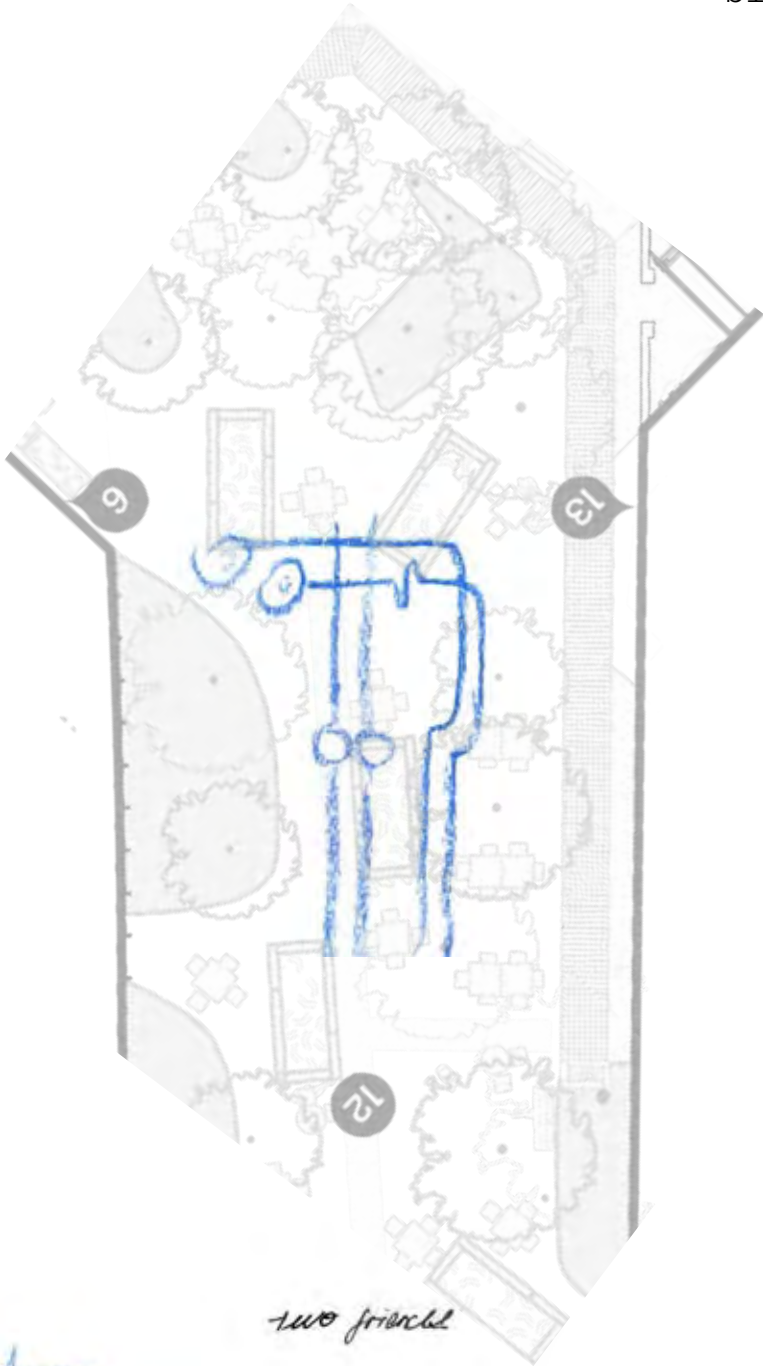
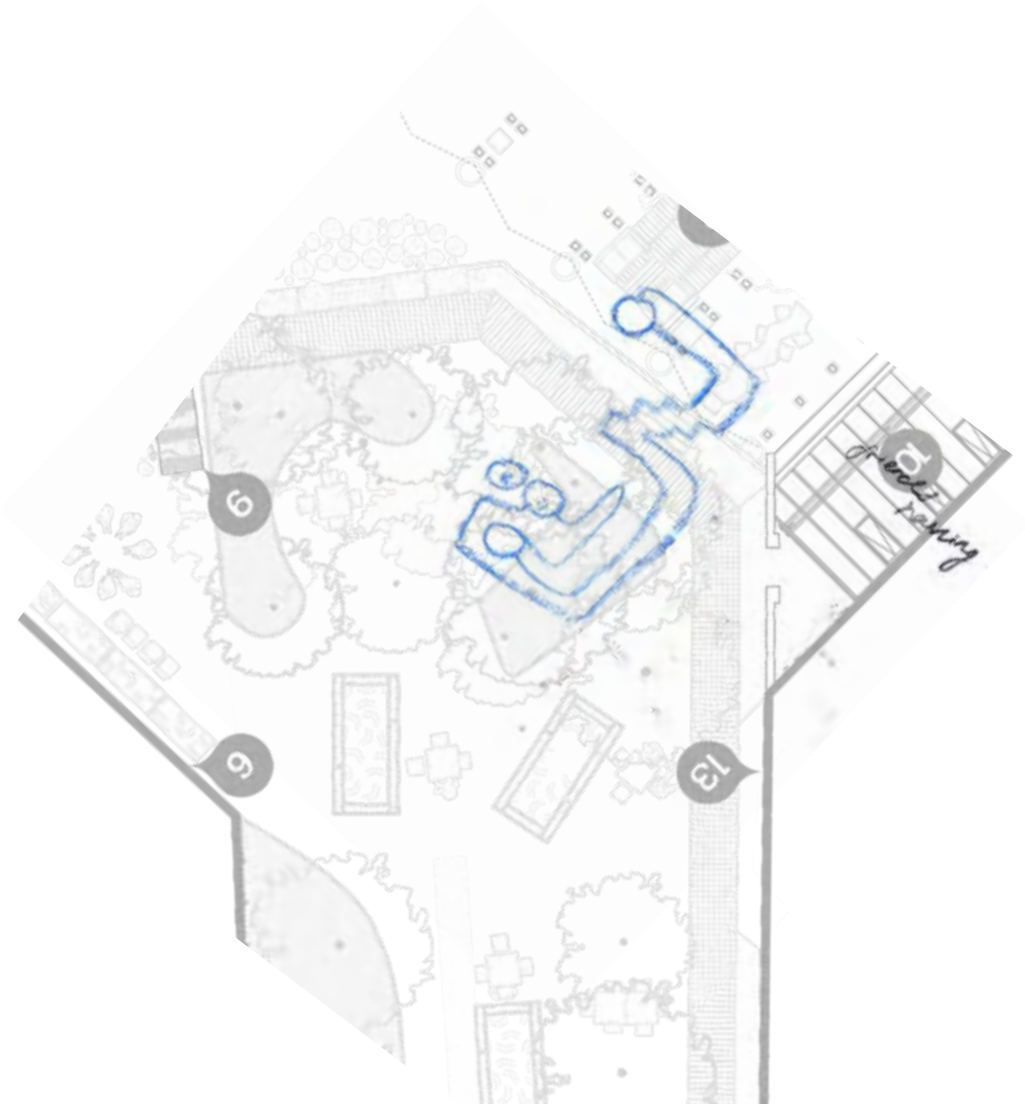


women with own
coffee





two women looking
where to rest

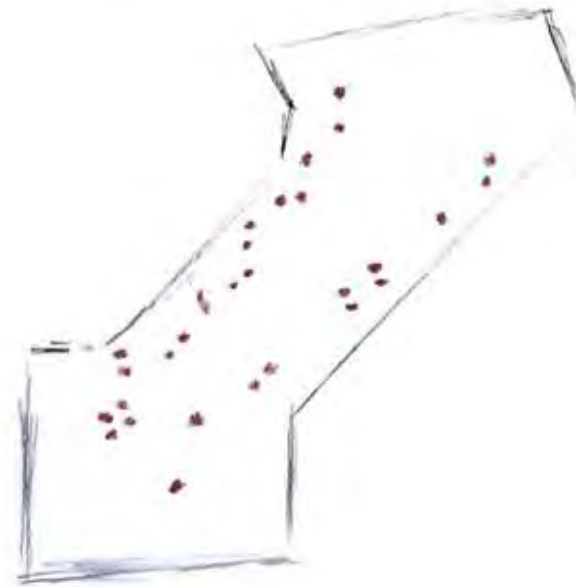


5:30 PM



29p.

6:10 PM



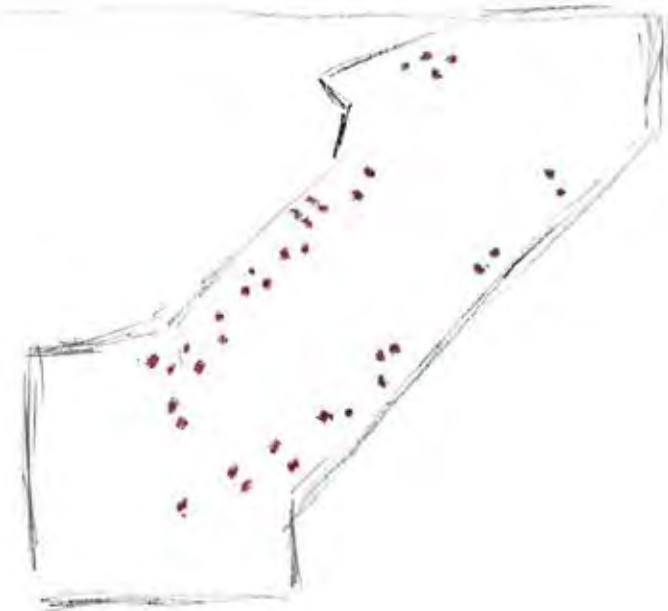
30p.

5:50 AM



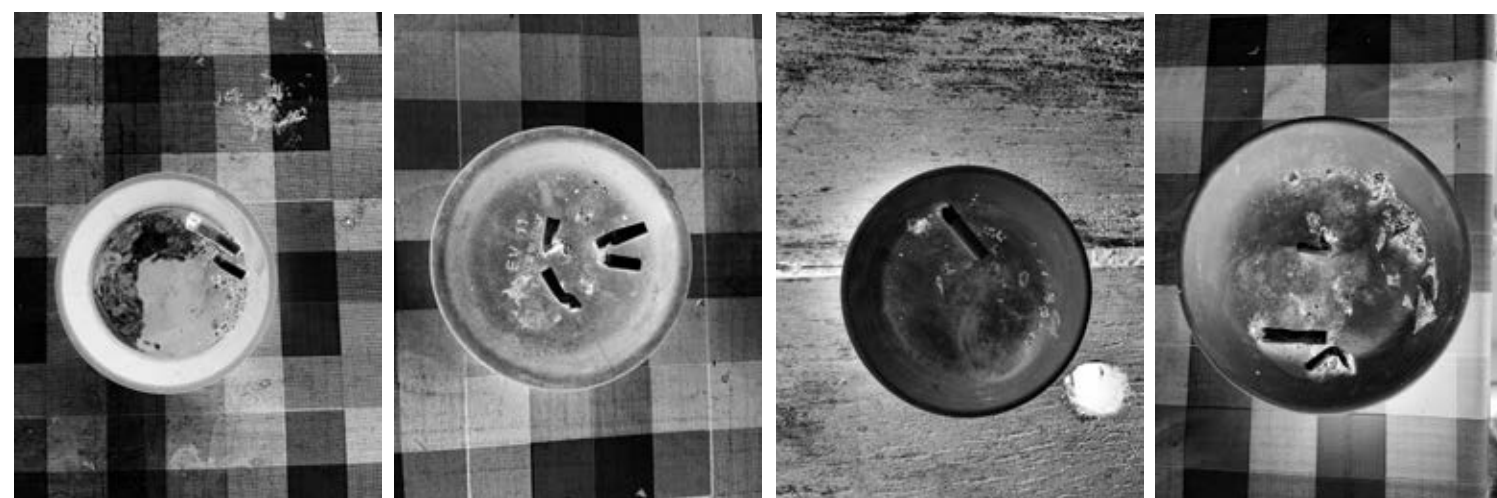
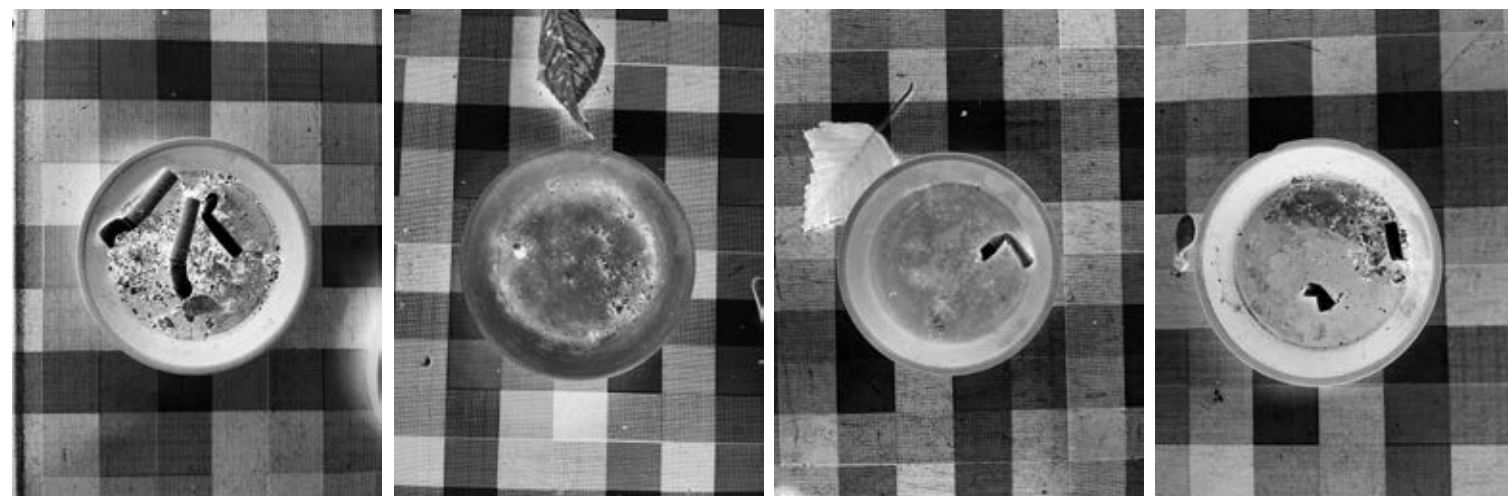
34p.

6:30 AM



32p.

I also tried another way of mapping the people in the area by counting and locating them in the space every 20 minutes. This was interesting because I can map the distribution of the living areas of the garden just by placing the people, and it gives the illusion of movement. Other than that it is not giving more information.



I was still curious with the contrast between the traces of smoking and the no smoking signs.

I took the pictures from the cigarette leaftovers and turned them black and white in order to create negative spaces where the object is.

FEEDBACK & NOTES

Oct 4 | 2022

Tutorials

focus on the visual aspect

(measuring time of movement)

if create a document → you can do this with collecting

link to something concrete & real.

what was the reason on picking it.

make a work graphically.

research that is graphic design specifically

research visually → patterns, textures, materials, colors, shapes

look at references

→ think about the methods they use.

entirely with visual stuff.

a visual collection → repeat a system.

(7 times collecting)

avoid a solution.

create a system that runs for a week while.

→ create determine system → what they are telling that help us understand what's something to the place.

what the experiment or methods

says about the places.

system: you get a outcome.
if following 1 step case.

Feedback

what method is being @ insightful.

(consciously what did I want to show.

why do I choose.

connected people behaviour → map.

identity to maps → add @ context.

language I choose.

field notes combine. Susan Heider - map dreams

movement & look to observing.

identity

Patrick → think of the methods they used.

Deane & Rob → learning from bad vegot.

create my own typographic for movement.

↓
to understand @ something.

Other methods of mapping.

what is an appropriate & has a meaning to the place.

mapping photo → interacting form to photographs
can expose ideas.

the table displace.

what the cigarettes tell me

about people & relationship.

if have mean
up removed
map over map.

etc.

clear link between.

Method → the place → the insight.

Hockey archival → picture of the place.

I can join map & cigarette.

opened - ended → that it can continue running.

look at prompt.

processed a experimental

version, iterat, tweaking.

Not one thing.

Focus on one thing & show a version of a method
to deepen that.

Summary → final PP.

Reflected feedback → on process (show method)
what had been the most insightful.

Blog → documentation sketchbook digital.